



True Color Texture, Rpd Design Expert

Up3d Scanner Up560



Specializing in developing scanners over 8 years

UP560

True Color Texture,
Rpd Design Expert

2X3MP HFR cameras



Open System

Support PLY format ,
3shape, exocad import directly



True Color Texture Scan

True color / Texture/ RPD



Full Arch Implant Scan In One Time

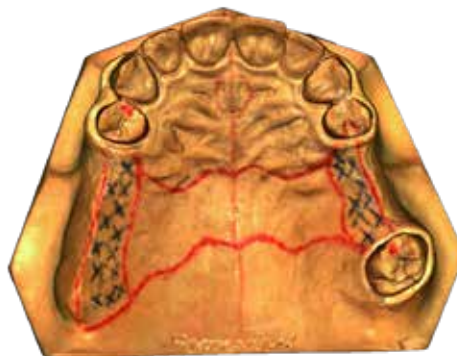
No need to unscrew the abutment,
significantly improving the scanning
efficiency of the implant restoration

True Color Texture, Rpd Expert Highly Restore The Real Color Of The Model To Help The Rpd Design

UP560 achieves new upgrade based on UP360 series,
with dual 3 megapixels cameras (high frame rate), realizes faster and
clearer capture image, and provides more efficient and accurate data for
the digital dental industry.



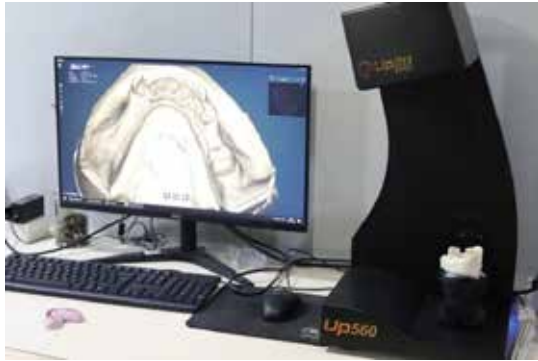
Color texture model



UP560 scan data

Texture Expert To Simplify The Rpd Process Provide One-stop Solution For Digitalization Of Rpd

No need to follow the traditional process step by step, all processes are left to the software within the computer, reducing manual errors and rework rates, maximize productivity and facilitate digital transformation.



360° Without Blind Angle Scanning Upgrade Unsectioned Model Scan Data

Upgraded appearance, cameras remains same principle. but faster scan speed , higher precision



UP560



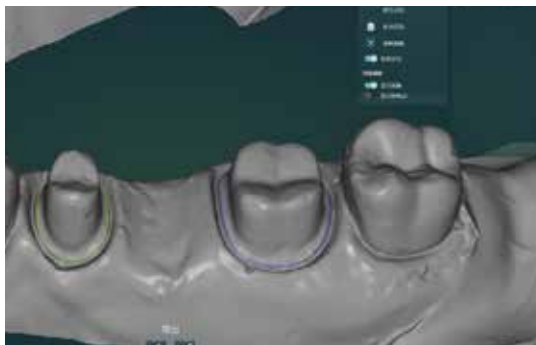
Traditional scanner



UPSCAN

Scan Software

Easy to operate scanning
Software, free upgrade



Margin Line

Draw margin line in UPSCAN and export margin data to design software.



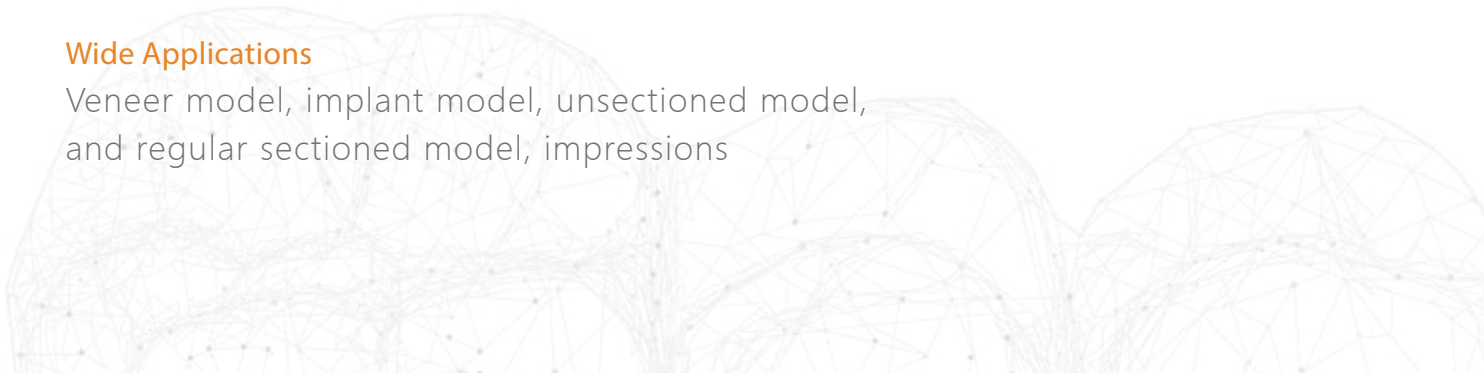
Open System

Open stl output and integrated with exocad and 3shape



Wide Applications

Veneer model, implant model, unsectioned model,
and regular sectioned model, impressions



Up3d Scanner Series Parameters

Model	UP560
Size	305*310*550 (mm)
Weight	10kg
Cameras	2*3.0 (mp)
Accuracy	8 microns
Projector	Customized blue-light / Multi-color scanning
Interface	USB 3.0
Output Formats	STL; UM; PLY; OBJ
Power Supply	AC 110-220V、50Hz
Product Features	All-in-one scan One click scanning triple tray Detect margin line Texture scan
Main Feature	Realistic/True Colour Texture Scanner, Denture Specialist 3D scanner for unsectioned model Full arch implants scanned in a single step
Scan Speed	Full arch: 12s Unsectioned models scan: 113s post&core scan: 93s All-in-one: 11s Triple tray: 101s True color texture scan: 126s





Digital technology improves life



www.up3ds.com info@up3d.cn +86-755-26983202

ADD: 17915 Sky Park Circle, Bldg.27, Suite E, Irvine, CA 92614, USA